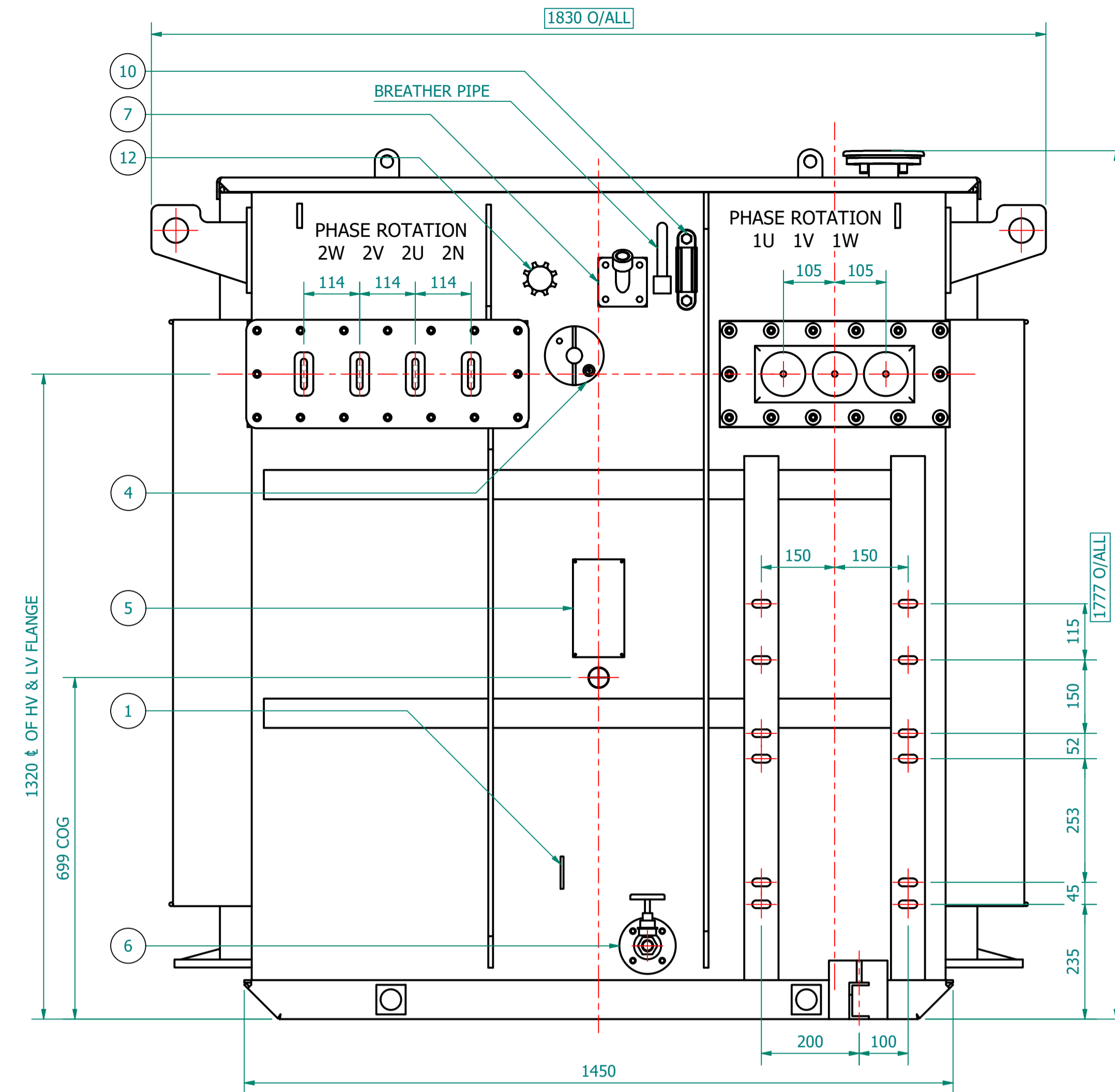
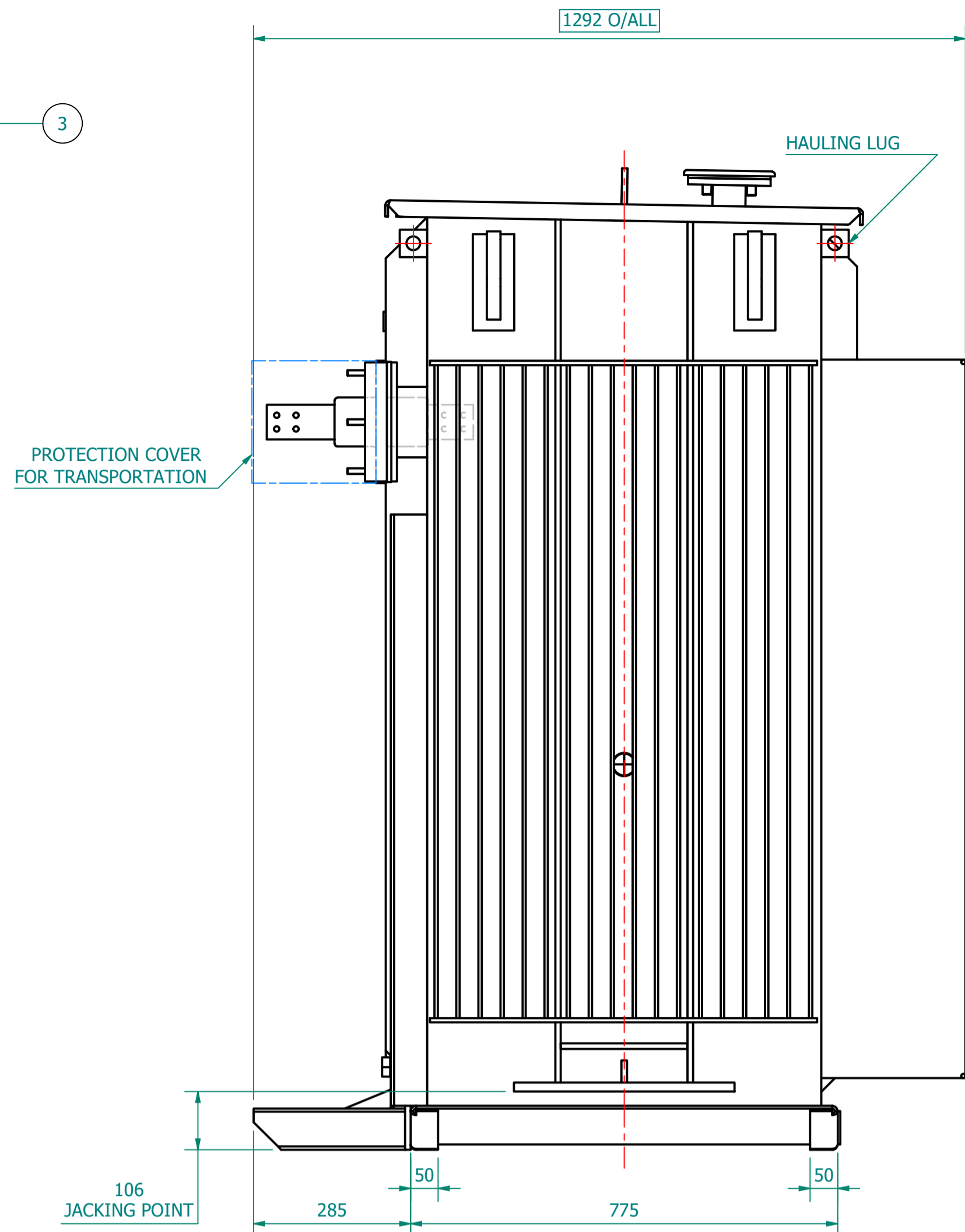
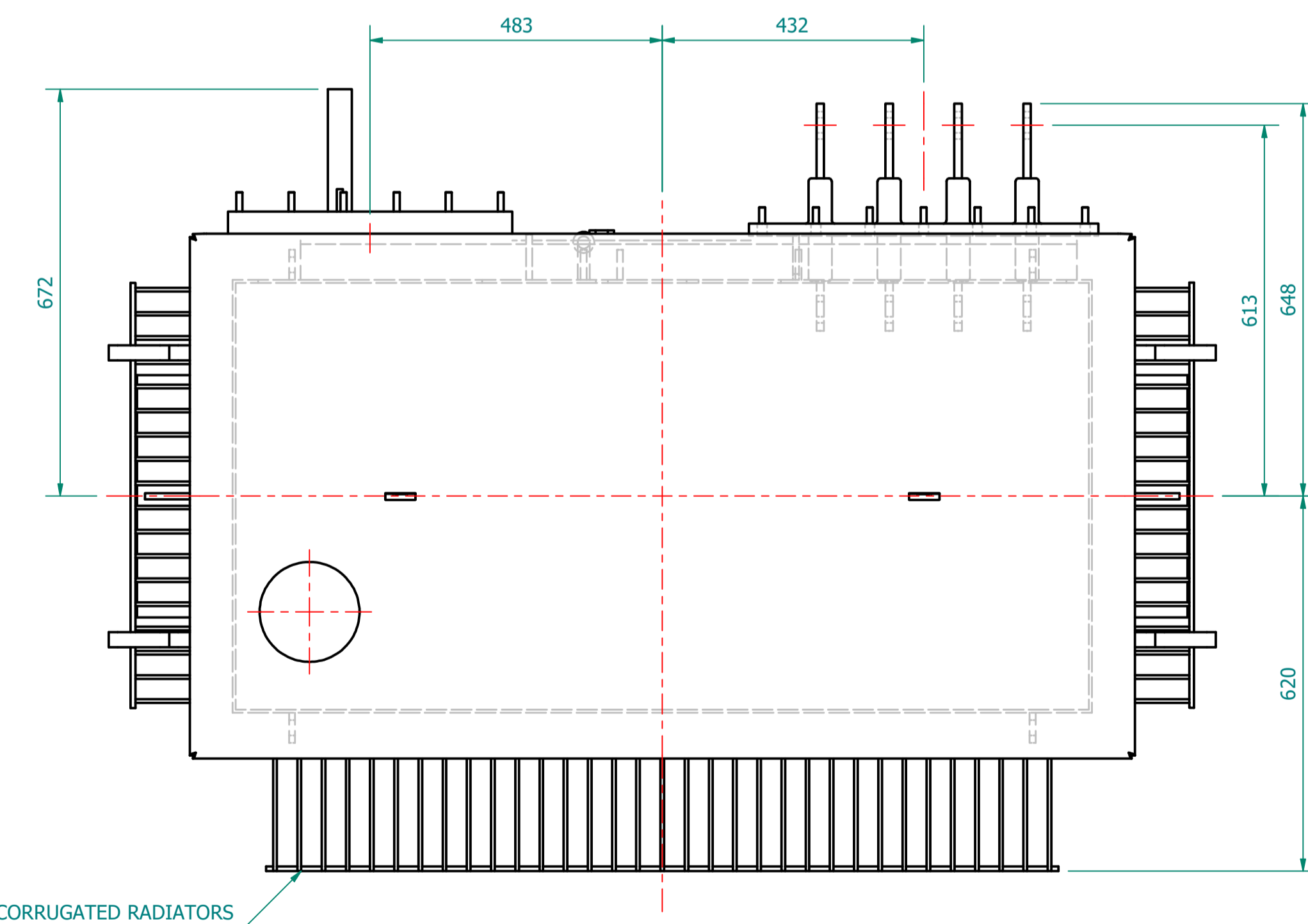


PLAN VIEW



TRANSFORMER WEIGHT & VOLUME		
CORE AND WINDING	kg	2225
TANK AND FITTING	kg	1495
COOLING LIQUID VOLUME	L	951
COOLING LIQUID WEIGHT	kg	780
TOTAL TX WEIGHT	kg	4500

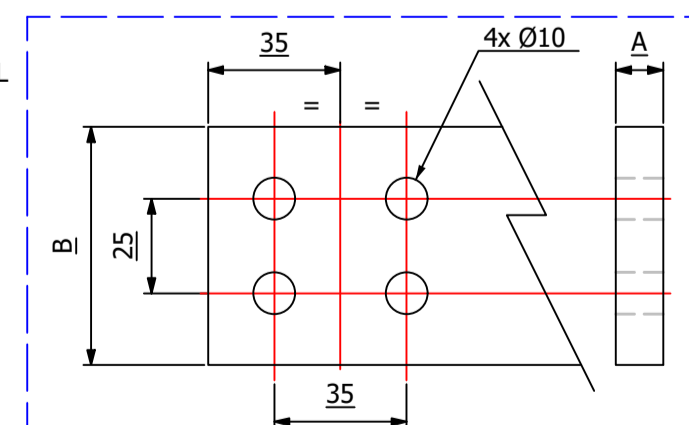


1500kVA ELECTRICAL RATINGS					
No Load Voltage Ratio at Normal Tap	HV Tappings	Vector Group	Frequency	Full-Load Current at Normal Tap	
				HV Side	LV Side
11000-6600 / 433V	+5 to -5.0% in 2.5% INCREMENTS	Dyn11	50Hz	78.729 - 131.215A	2000.059A
Design Impedance at Normal Tap	No Load Losses at rated Voltage & Frequency	Full Load Losses at rated Current & at 75°C Temp.	Temp. Rise above Ambient 40°C		
			in Oil by Therm.	in Wdg. by Res.	
5.5%	1167W	12413W	60°C	65°C	

- GENERAL NOTES
- ALL DIMENSIONS ARE IN 'mm'.
  - ALL DIMENSIONS/WEIGHTS ARE SUBJECT TO ± 10% TOLERANCE.
  - ELECTRONIC SCALE - 1:1 (ONLY WRITTEN DIMENSIONS TO BE FOLLOWED).
  - TOLERANCE ON IMPEDANCE PER IEC:60076.
  - PAINT SHADE.: RAL7033 TO ISO12944 - MIN C4 SPEC.

ESSENTIAL LABELS

- ITEM 7 TAP CHANGER WARNING LABEL
- ITEM 4 COLD COOLANT LEVEL

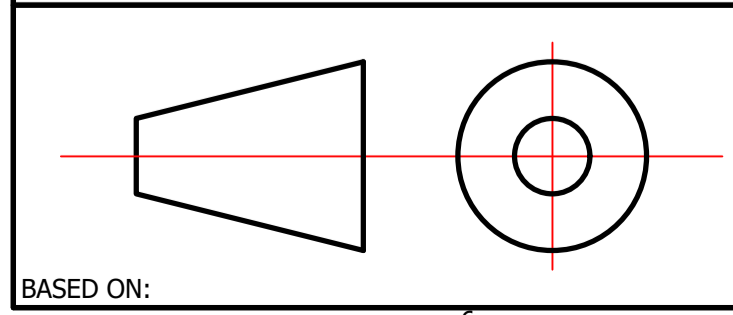


LV TERMINAL DETAILS		
1700A	A = 12.5 mm	B = 63 mm
2500A	A = 20 mm	B = 63 mm
3150A	A = 35 mm	B = 63 mm
4000A	A = 35 mm	B = 70 mm

ITEM	QTY	DESCRIPTION
12	1	VOLTAGE CHANGE OVER SWITCH
11	4	TRANSFORMER LIFTING LUGS
10	1	OIL LEVEL GAUGE (with 15°) COLD OIL LEVEL MARK
9	1	TRANSFORMER BASE (SKID TYPE) c/w HAULAGE HOLES
8	2	JACKING POINT
7	1	THERMOMETER POCKET (3/4" BSP MALE THREAD)
6	1	DRAIN VALVE (25NB) with MALE PLUG
5	1	RATING & DIAGRAM PLATE (SS)
4	1	DE-ENERGIZE TAP CHANGER (5-Position & Padlockable)
3	1	TOP COVER with LIFTING LUGS (x2)
2	1	OIL FILLING PIPE WITH FLANGED COVER
1	1	EARTHING TERMINAL (FLAT TYPE suitable for M12 Bolt)

IF IN DOUBT - ASK. REMOVE ALL SHARP EDGES. DO NOT SCALE. DRAWING NOT TO SCALE

MANUFACTURED BY: **TOSHIBA TRANSFORMER**  
TOSHIBA TRANSMISSION & DISTRIBUTION SYSTEMS (INDIA) PVT. LTD.



REV	REV BY	VERIFIED	APPROVED	DESCRIPTION

REVISION DESCRIPTION	REV	PROJECT
ORIGINAL	00	CUSTOMER
		S.O. NUMBER
		P.O. NUMBER
		W.O. NUMBER

DATE	PROJECT
14-OCT-2022	

DRAWING TITLE
GENERAL ARRANGEMENT DRAWING FOR d2, 1500kVA 11000-6600/433V, 50Hz, Dyn11, ONAN AL WOUND UNIT TYPE TRANSFORMER

SUPPLIED BY: **Wilson Power Solutions Ltd.**  
Westland Square, Leeds, West Yorkshire LS11 5SS, United Kingdom  
Tel: +44 (0) 113 271 7588 Fax: +44 (0) 113 277 5124  
web: www.wilsonpowersolutions.co.uk email: info@wilsonpowersolutions.co.uk

web: www.wilsonpowersolutions.co.uk email: info@wilsonpowersolutions.co.uk

DRAWN BY: J. NOVO DATE: 14/10/2022 DRG NO: WPS-d2-UKPN-1500-AL-DR-U001