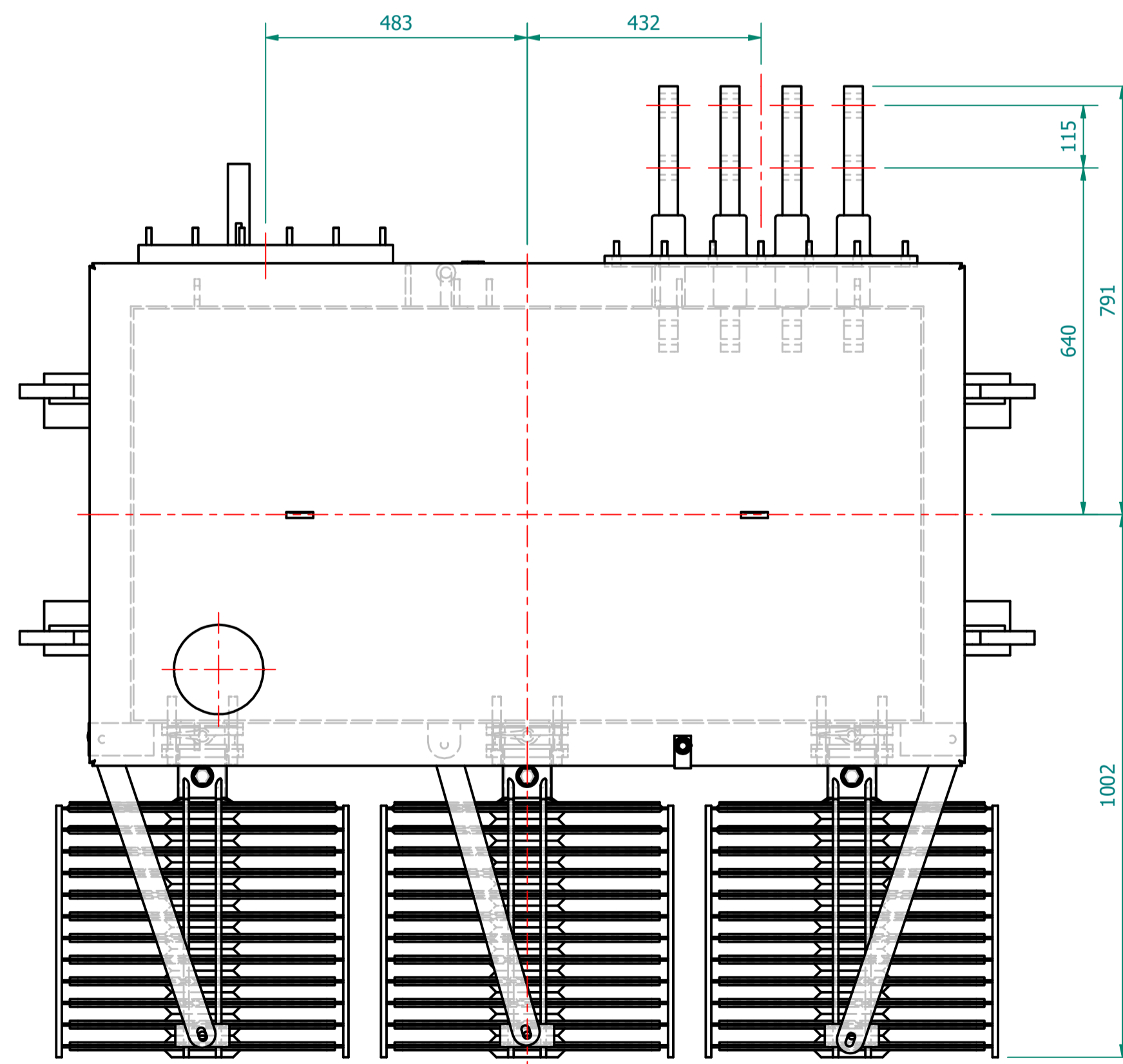
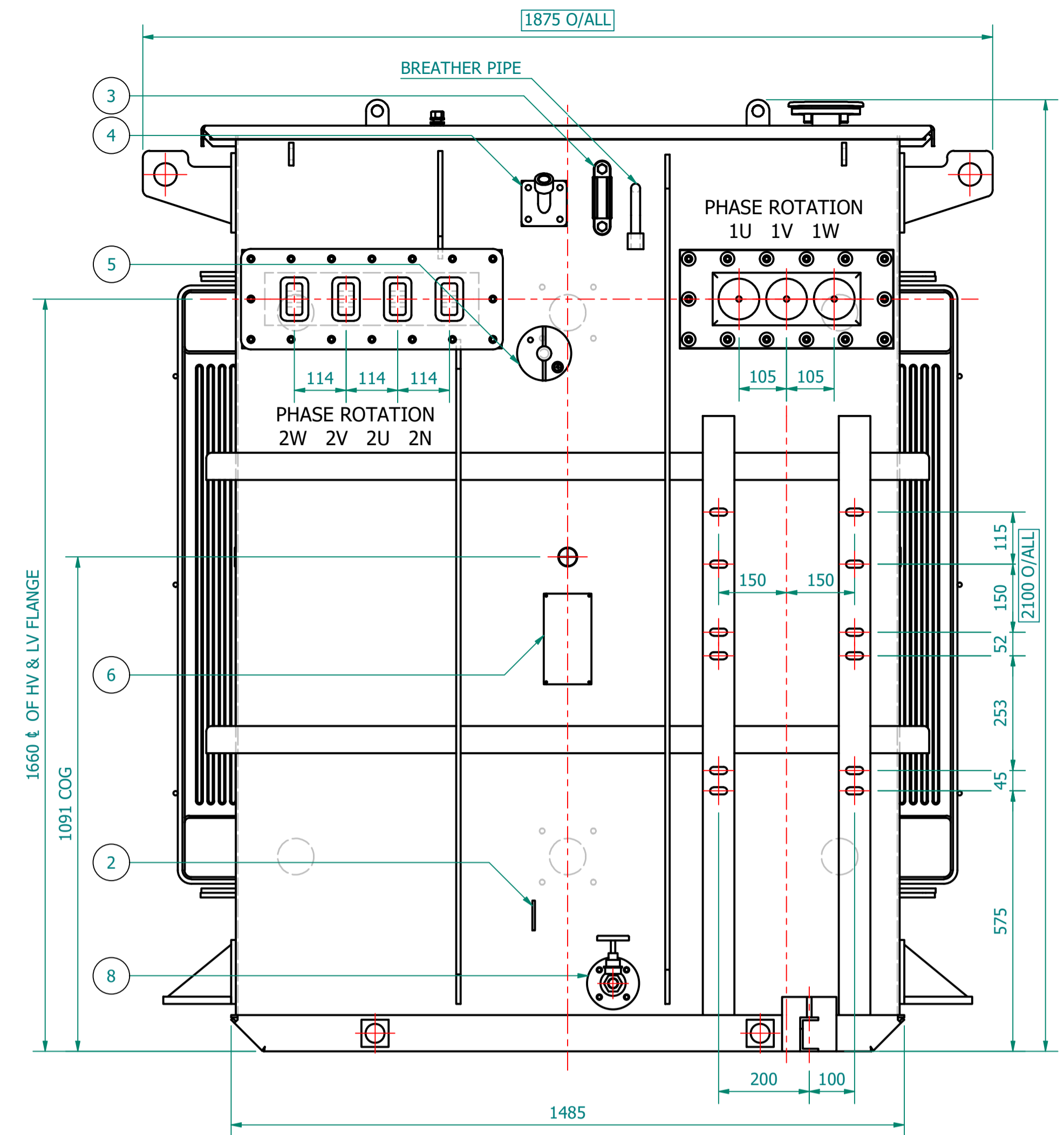
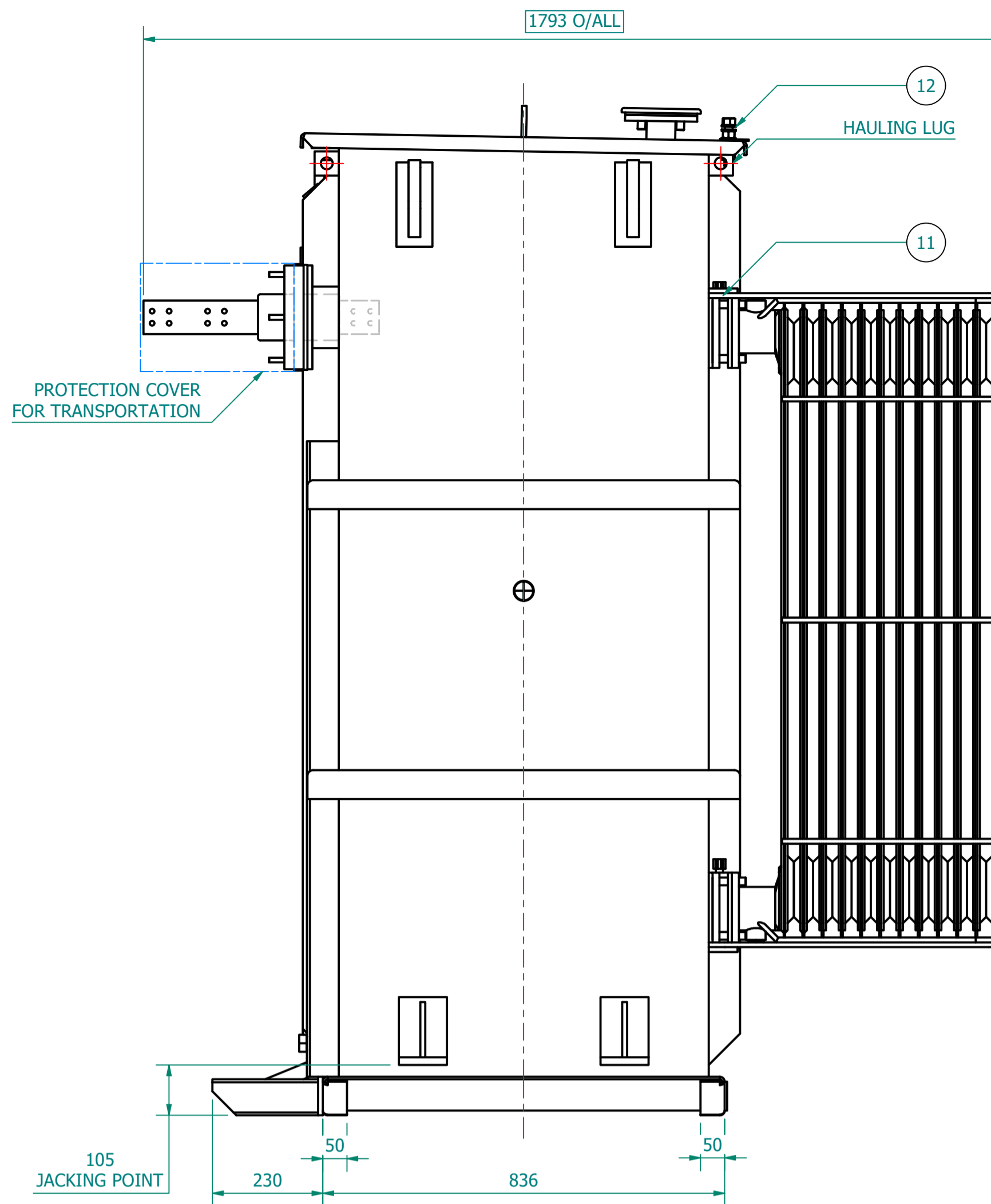


PLAN VIEW



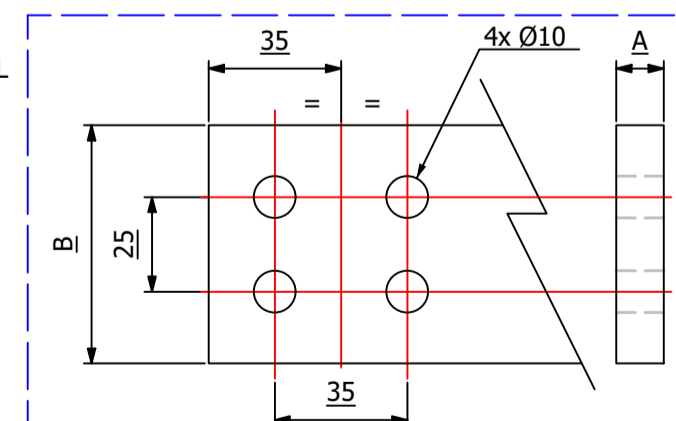
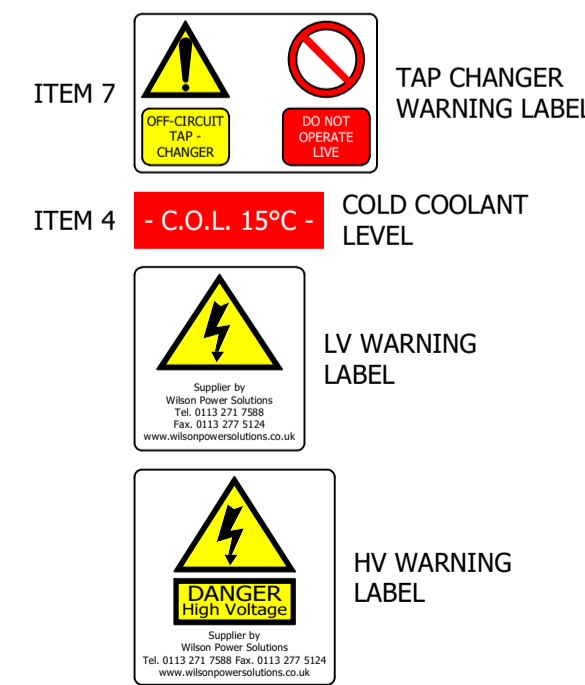
WILSON
d² UNIT TYPE
DISTRIBUTION

TRANSFORMER WEIGHT & VOLUME		
CORE AND WINDING	kg	3025
TANK AND FITTING	kg	2193
COOLING LIQUID VOLUME	L	1100
COOLING LIQUID WEIGHT	kg	902
TOTAL TX WEIGHT	kg	6120

2500kVA ELECTRICAL RATINGS					
No Load Voltage Ratio at Normal Tap	HV Tappings	Vector Group	Frequency	Full-Load Current at Normal Tap	
				HV Side	LV Side
11000 / 433V	+5 to -5.0% in 2.5% INCREMENTS	Dyn11	50Hz	131.215A	3333.431A
Design Impedance at Normal Tap	No Load Losses at rated Voltage & Frequency	Full Load Losses at rated Current & at 75°C Temp.	Temp. Rise above Ambient 40°C		
			in Oil by Therm.	in Wdg. by Res.	
6.0%	1575W	18500W	60°C	65°C	

ITEM	QTY	DESCRIPTION
14	4	TRANSFORMER LIFTING LUGS
13	3	DETACHABLE RADIATORS with AIR-RELEASE & DRAIN PLUG (520W x 1200C x 125 x 40P)
12	1	EARTHING STRIP ARRANGEMENT BETWEEN TANK AND TOP COVER
11	4	RADIATOR VALVE
10	1	TOP COVER with LIFTING LUGS (x2)
9	1	OIL FILLING PIPE WITH FLANGED COVER
8	1	DRAIN VALVE (25NB) with MALE PLUG
7	4	JACKING PADS
6	1	RATING & DIAGRAM PLATE (SS)
5	1	DE-ENERGIZE TAP CHANGER (5-Position & Padlockable)
4	1	THERMOMETER POCKET (3/4" BSP MALE THREAD)
3	1	OIL LEVEL GAUGE (with 15°) COLD OIL LEVEL MARK
2	1	EARTHING TERMINAL (FLAT TYPE suitable for M12 Bolt)
1	1	TRANSFORMER BASE (SKID TYPE) c/w HAULAGE HOLES

ESSENTIAL LABELS



Current Rating	A	B
1700A	A = 12.5 mm	B = 63 mm
2500A	A = 20 mm	B = 63 mm
3150A	A = 35 mm	B = 63 mm
4000A	A = 35 mm	B = 70 mm

- GENERAL NOTES
- ALL DIMENSIONS ARE IN 'mm'.
 - ALL DIMENSIONS/WEIGHTS ARE SUBJECT TO ± 10% TOLERANCE.
 - ELECTRONIC SCALE - 1:1 (ONLY WRITTEN DIMENSIONS TO BE FOLLOWED).
 - TOLERANCE ON IMPEDANCE PER IEC:60076.
 - PAINT SHADE.: RAL7033 TO ISO12944 - MIN C4 SPEC.

IF IN DOUBT - ASK. REMOVE ALL SHARP EDGES. DO NOT SCALE. DRAWING NOT TO SCALE

MANUFACTURED BY: **TOSHIBA TRANSFORMER**
TOSHIBA TRANSMISSION & DISTRIBUTION SYSTEMS (INDIA) PVT. LTD.

REV	REV BY	VERIFIED	APPROVED	DESCRIPTION

REVISION DESCRIPTION	REV	PROJECT
ORIGINAL	00	

REV. BY:	DATE	CUSTOMER
J. NOVO	14-OCT-2022	

PROJECT	S.O. NUMBER	P.O. NUMBER	W.O. NUMBER

DRAWING TITLE
GENERAL ARRANGEMENT DRAWING FOR d2, 2500kVA 11000/433V, 50Hz, Dyn11, ONAN AL WOUND UNIT TYPE TRANSFORMER

SUPPLIED BY:	WILSON POWER SOLUTIONS
Westland Square, Leeds, West Yorkshire LS11 5SS, United Kingdom Tel: +44 (0) 113 271 7588 Fax: +44 (0) 113 277 5124 web: www.wilsonpowersolutions.co.uk email: info@wilsonpowersolutions.co.uk	