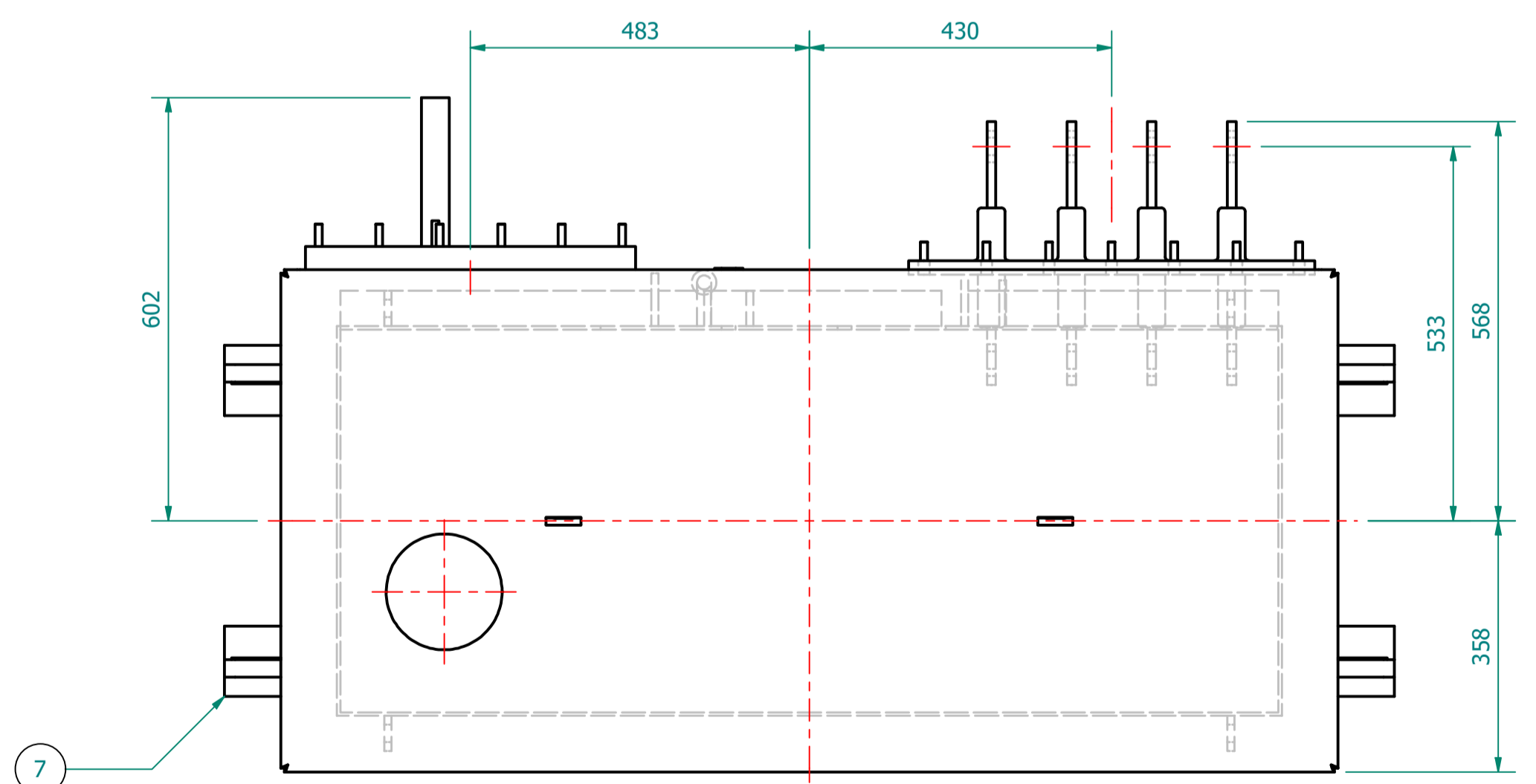


PLAN VIEW



TRANSFORMER WEIGHT & VOLUME		
CORE AND WINDING	kg	800
TANK AND FITTING	kg	790
COOLING LIQUID VOLUME	L	744
COOLING LIQUID WEIGHT	kg	610
TOTAL TX WEIGHT	kg	2200

315kVA ELECTRICAL RATINGS					
No Load Voltage Ratio at Normal Tap	HV Tappings	Vector Group	Frequency	Full-Load Current at Normal Tap	
				HV Side	LV Side
11000 / 433V	+5.0 to -5.0% in 2.5% INCREMENTS	Dyn11	50Hz	16.533A	420.012A
Design Impedance at Normal Tap	No Load Losses at rated Voltage & Frequency	Full Load Losses at rated Current & at 75°C Temp.	Temp. Rise above Ambient 40°C		
			in Oil by Therm.	in Wdg. by Res.	
4.75%	324W	2800W	60°C	65°C	

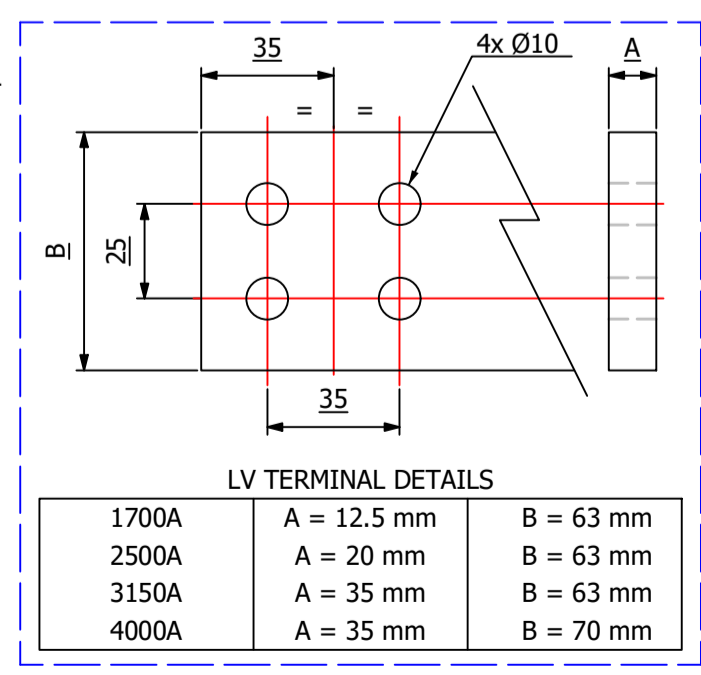
**ESSENTIAL LABELS**

ITEM 7 TAP CHANGER WARNING LABEL

ITEM 4 COLD COOLANT LEVEL - C.O.L. 15°C

LV WARNING LABEL

HV WARNING LABEL

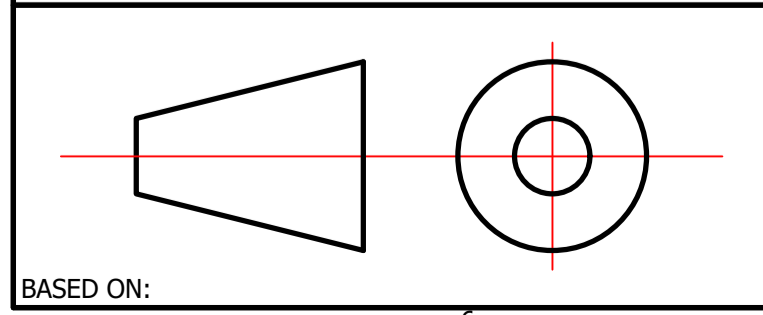


- GENERAL NOTES**
- ALL DIMENSIONS ARE IN 'mm'.
  - ALL DIMENSIONS/WEIGHTS ARE SUBJECT TO ± 10% TOLERANCE.
  - ELECTRONIC SCALE - 1:1 (ONLY WRITTEN DIMENSIONS TO BE FOLLOWED).
  - TOLERANCE ON IMPEDANCE PER IEC:60076.
  - PAINT SHADE.: RAL7033 TO ISO12944 - MIN C4 SPEC.

ITEM	QTY	DESCRIPTION
11	4	TRANSFORMER LIFTING LUGS
10	1	OIL LEVEL GAUGE (with 15°) COLD OIL LEVEL MARK
9	1	THERMOMETER POCKET (3/4" BSP MALE THREAD)
8	1	DRAIN VALVE (25NB) with MALE PLUG
7	4	JACKING PADS
6	1	RATING & DIAGRAM PLATE (SS)
5	1	DE-ENERGIZE TAP CHANGER (5-Position & Padlockable)
4	1	EARTHING TERMINAL (FLAT TYPE suitable for M12 Bolt)
3	1	TOP COVER with LIFTING LUGS (x2)
2	1	TRANSFORMER BASE (SKID TYPE) c/w HAULAGE HOLES
1	1	OIL FILLING PIPE WITH FLANGED COVER

IF IN DOUBT - ASK. REMOVE ALL SHARP EDGES. DO NOT SCALE. DRAWING NOT TO SCALE

MANUFACTURED BY: **TOSHIBA TRANSFORMER**  
TOSHIBA TRANSMISSION & DISTRIBUTION SYSTEMS (INDIA) PVT. LTD.



REV	REV BY	VERIFIED	APPROVED	DESCRIPTION

REVISION DESCRIPTION	REV	PROJECT
ORIGINAL	00	

DATE	CUSTOMER	S.O. NUMBER	P.O. NUMBER	W.O. NUMBER
14-OCT-2022				

DRAWING TITLE
GENERAL ARRANGEMENT DRAWING FOR d2, 315kVA 11000/433V, 50Hz, Dyn11, ONAN AL WOUND UNIT TYPE TRANSFORMER

SUPPLIED BY: **Wilson Power Solutions Ltd.**  
Westland Square, Leeds, West Yorkshire LS11 5SS, United Kingdom  
Tel: +44 (0) 113 271 7588 Fax: +44 (0) 113 277 5124  
web: www.wilsonpowersolutions.co.uk email: info@wilsonpowersolutions.co.uk

DRAWN BY: J. NOVO DATE: 14/10/2022 DRG NO: WPS-d2-UKPN-315-AL-U001