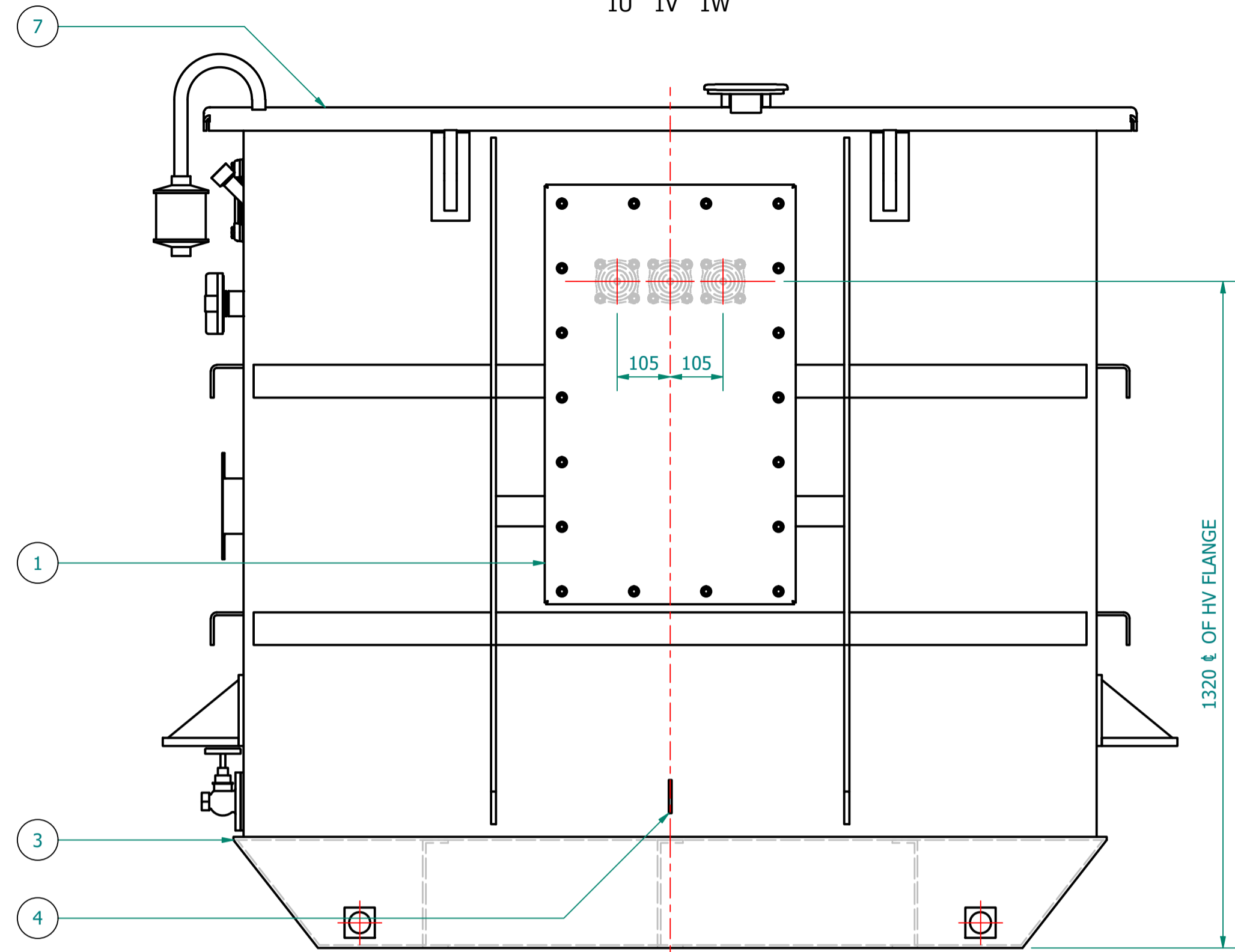
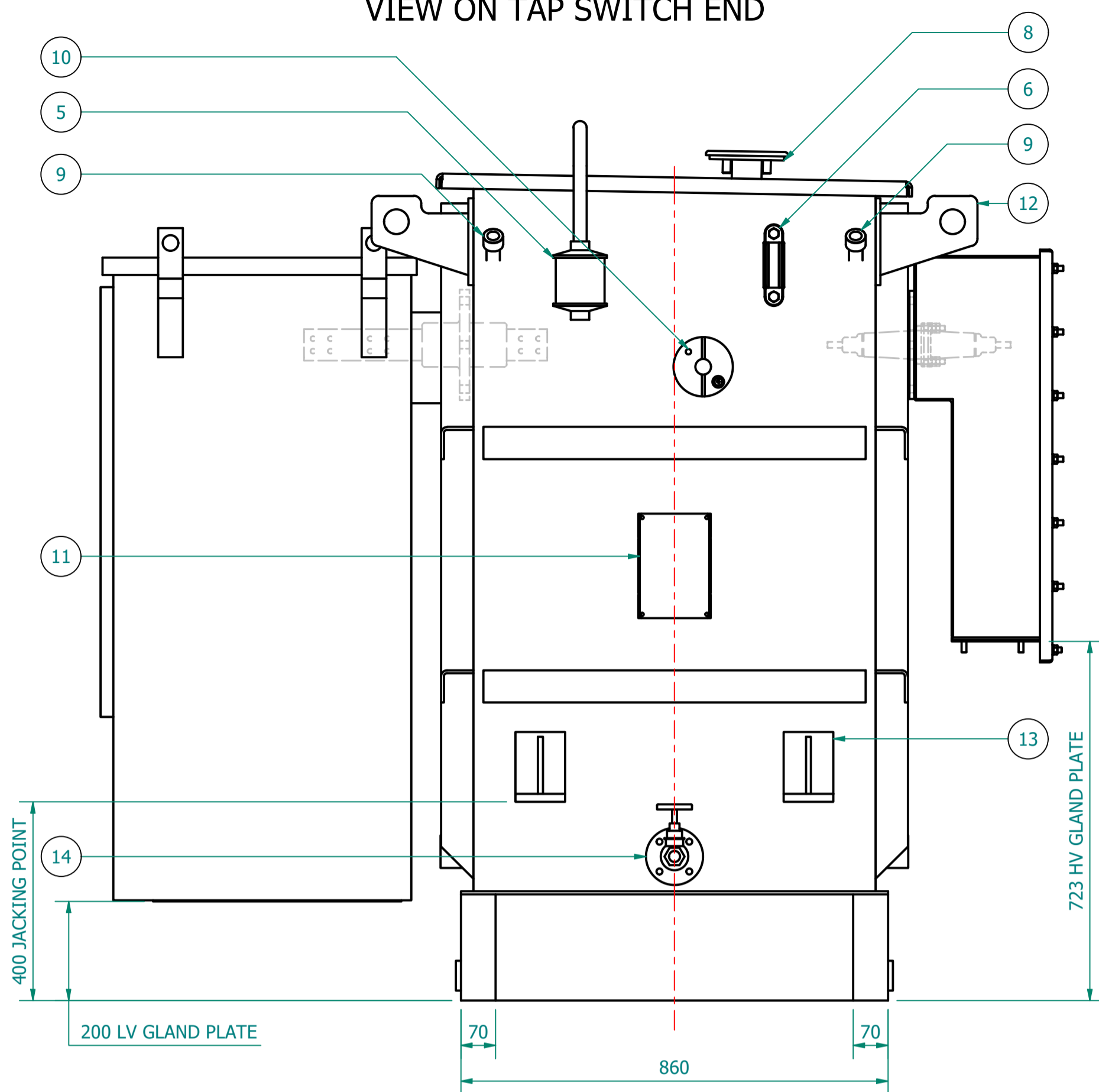


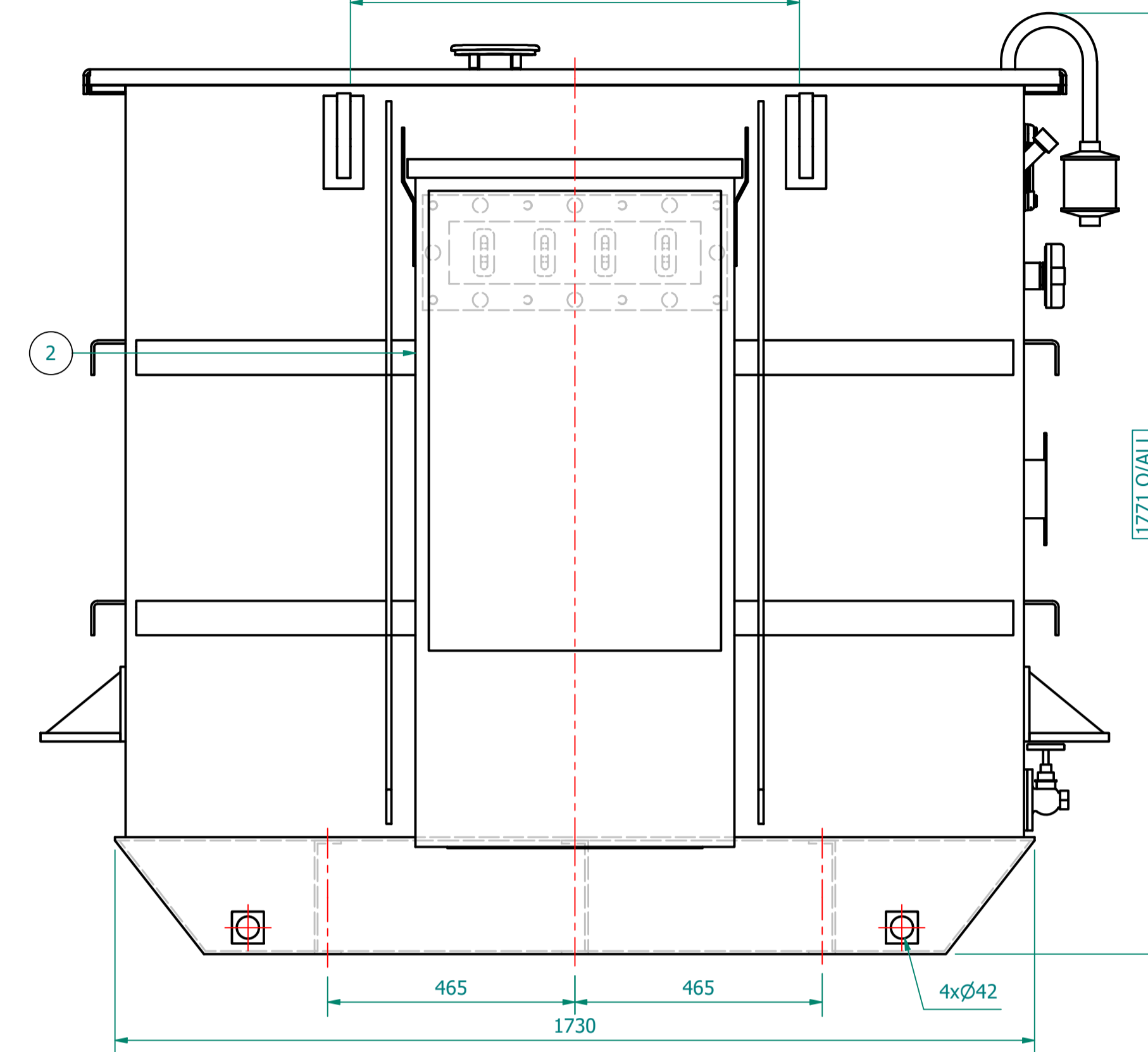
VIEW ON HV SIDE  
PHASE ROTATION  
1U 1V 1W



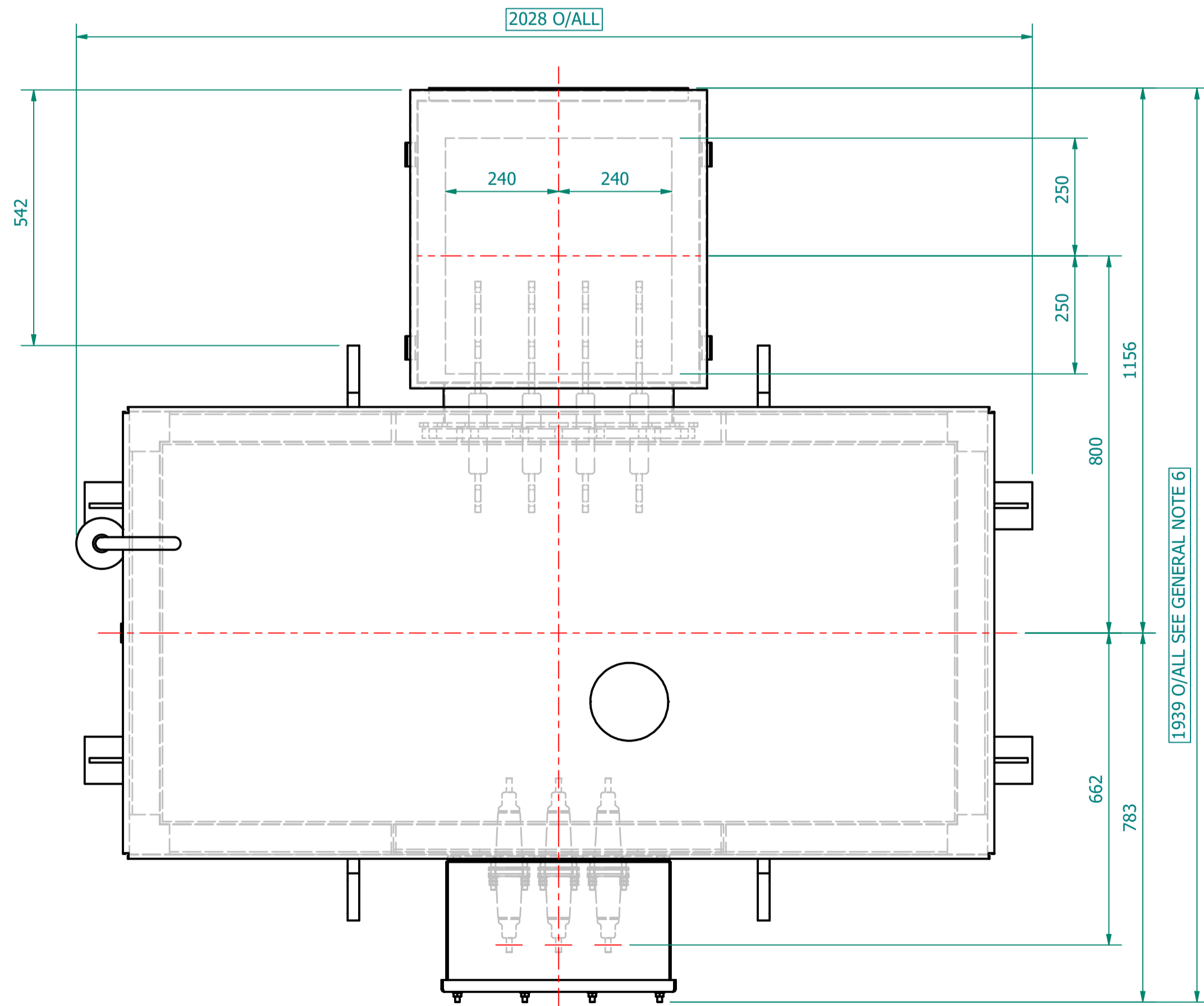
VIEW ON TAP SWITCH END



VIEW ON LV SIDE  
PHASE ROTATION  
2W 2V 2U 2N  
845 TYP. TO 2 PLACES



PLAN VIEW



GENERIC LV CABINET SHOWN.  
SIZES MAY CHANGE.  
FINAL DESIGN MAY REQUIRE SEPARATION  
FROM THE TX FOR TRANSPORTATION.

ESSENTIAL LABELS

- ITEM 10 TAP CHANGER WARNING LABEL
- ITEM 6 COLD COOLANT LEVEL
- ITEM 2 LV WARNING LABEL
- ITEM 1 HV WARNING LABEL

HV TERMINAL DETAILS (01)

0 - 250A	A = M12	20 NM
251 - 400A	A = M16	25 NM



TRANSFORMER WEIGHT & VOLUME

CORE AND WINDING	kg	2640
TANK AND FITTING	kg	800
COOLING LIQUID VOLUME	L	1155
COOLING LIQUID WEIGHT	kg	940
TOTAL TX WEIGHT	kg	4380
ADDITIONS TO THE TRANSFORMER WEIGHT		
LV CABINET	Kg	---

800kVA ELECTRICAL RATINGS

No Load Voltage Ratio at Normal Tap	HV Tappings	Vector Group	Frequency	Full-Load Current at Normal Tap	
				HV Side	LV Side
11000 / 415V	+7.5 to -5.0% IN 2.5% INCREMENTS	Dyn11	50Hz	41.989A	1112.964A
Design Impedance at Normal Tap	No Load Losses at rated Voltage & Frequency	Full Load Losses at rated Current & at 75°C Temp.	Temp. Rise above Ambient 40°C		
			in Oil by Therm.	in Wdg. by Res.	
4.75%	425W	4265W	60°C	65°C	

- GENERAL NOTES
- ALL DIMENSIONS ARE IN 'mm'.
  - ALL DIMENSIONS/WEIGHTS ARE SUBJECT TO ± 10% TOLERANCE.
  - ELECTRONIC SCALE - 1:1 (ONLY WRITTEN DIMENSIONS TO BE FOLLOWED).
  - TOLERANCE ON IMPEDANCE PER IEC:60076.
  - PAINT SHADE.: 632 As PER BS:381C (SEMI GLOSS) TO ISO12944 - MIN C4H SPEC.
  - O/ALL DIMS ARE SUBJECT TO EQUIPMENT DOOR OPENING DISTANCES.

ITEM	QTY	DESCRIPTION
14	1	DRAIN VALVE (25NB) WITH MALE PLUG
13	4	JACKING PADS
12	4	TRANSFORMER LIFTING LUGS
11	1	RATING & DIAGRAM PLATE (SS)
10	1	OFF-CIRCUIT TAP SWITCH (6-Position & Padlockable)
9	2	THERMOMETER POCKET (3/4" BSP MALE THREAD)
8	1	OIL FILLING PIPE WITH FLANGED COVER
7	1	TOP COVER WITH LIFTING LUGS (x2)
6	1	OIL LEVEL GAUGE (with 15°) COLD OIL LEVEL MARK
5	1	SILICA GEL BREATHER TYPE R
4	2	EARTHING TERMINAL (FLAT TYPE suitable for M12 Bolt)
3	1	TRANSFORMER BASE (SKID TYPE) c/w HAULAGE HOLES & BRACING
2	1	LV CABINET, BOTTOM ENTRY, GENERIC MODEL - SUBJECT TO CHANGE (FACING-'F', BS:2562)
1	1	HV CABLE BOX - 12kV, 3-POLE, HEAT-SHRINK INSULATION, (FACING-'F' BS:2562) SUITABLE FOR 1 x 3c CABLE - MAX. 185mm.sq

IF IN DOUBT - ASK. REMOVE ALL SHARP EDGES. DO NOT SCALE. DRAWING NOT TO SCALE

REVISION HISTORY

REV	REV BY	VERIFIED	APPROVED	DESCRIPTION

REVISION DESCRIPTION

REV	DESCRIPTION	DATE
00	ORIGINAL	21-JUN-2024

DRAWING TITLE

GENERAL ARRANGEMENT DRAWING FOR  
800kVA WILSON e4 AMORPHOUS ULTIMATE LOW LOSS  
11000/415V, 50Hz, Dyn11, ONAN  
AL WOUND DISTRIBUTION TRANSFORMER  
LV CABINET

DRAWN BY: J. NOVO  
DATE: 21/06/2024  
DRAWING NO.: WPS-E4-800-AL-A001

**WILSON POWER SOLUTIONS**  
Westland Square, Leeds  
West Yorkshire LS11 5SS, United Kingdom  
Tel: +44 (0) 113 271 7588  
Fax: +44 (0) 113 271 5124  
web: www.wilsonpowersolutions.co.uk email: info@wilsonpowersolutions.co.uk

WPS-E4-800-AL-A001 SHEET 1 OF 1